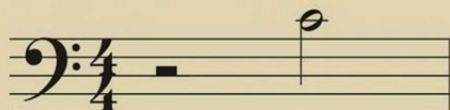


Half and Whole Rests

The half rest sits *above* middle line 3.

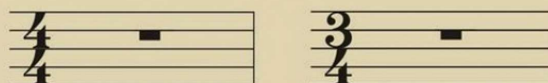
■ = 2 beats of silence



Count: "1 2 3 4"

The whole rest hangs *below* line 4.

■ = a whole measure of silence

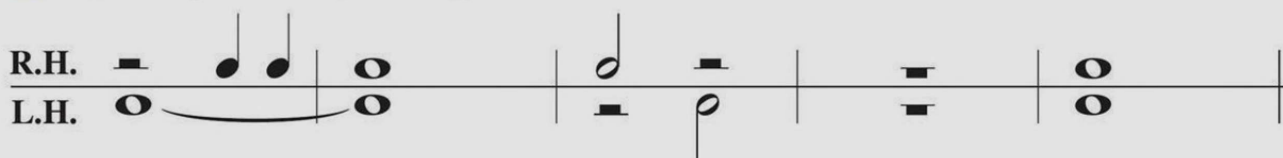


4 beats of silence
Count: "1-2-3-4"

3 beats of silence
Count: "1-2-3"

Rhythm Warm-up

■ Tap the rhythm below, counting aloud.



Count: 1 2 3 4 1 2 3 4 1 2 3 4 1 2 3 4 1 2 3 4

■ Identify each rest in *measures 1-8* as a half rest or whole rest.

Royal Procession

Majestically



1 on G
3 on E
5 on C



1

9

2

mf

1

13

17

f

21



The form of this piece is **A B A¹**. Look for the section that is different. Mark it **B**. When section **A** returns at *measure 17*, compare it to *measures 1–8* to discover the difference in *measures 23–24*.